



**ADJUSTABLE HR
FLANGE IN 2 PIECES**

ADJUSTABLE HR FLANGE IN 2 PIECES



The adjustable flange is a type of flange mainly used in PVC pipes and flange holders.

The HR model has been specifically designed with these PVC systems and HIDRAULICA ROMYSPAN's HR20 plastic valves in mind. It consists of 2 adjustable pieces joined together that form a flange using a metal pin or pin, allowing greater maneuverability. Its simple design makes it easy to assemble on site

The drills are compatible with DIN and ANSI in the same article.

NOTABLE FEATURES

- ★ Compatible with PVC pipes and flange holders
- ★ Compatible with ROMYSPAN HR20 valves
- ★ Flange according to DIN and ANSI regulations
- ★ Simple and robust design.
- ★ Easy disassembly and assembly thanks to being two pieces

ADVANTAGES REGARDING OTHER TYPES OF FLANGE

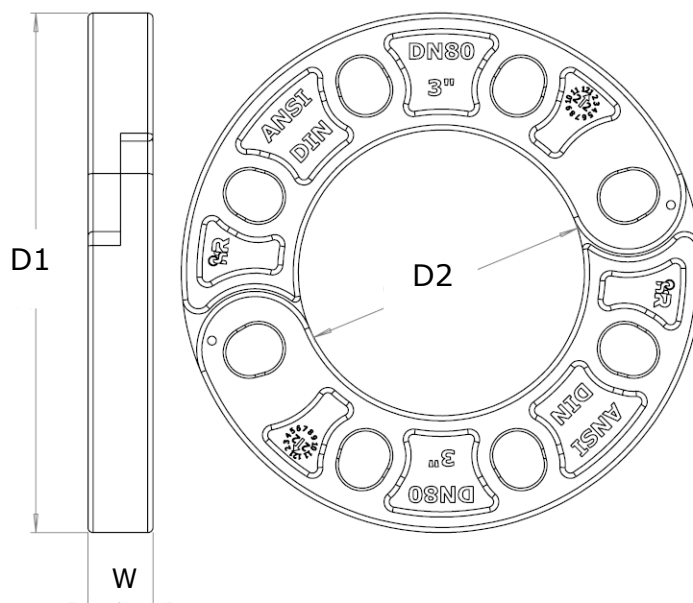
Material	Advantages
PVC or PE	Much more resistant
Metallic	More economical, does not rust, less weight

MATERIALS

Component	Material
Body	Fiberglass reinforced nylon
Barrette	A4 stainless steel



PHYSICAL SPECIFICATIONS:



CONNECTIONS CONNECTION	Material	D.N. (mm)	D1 (mm)	D2 (mm)	W (mm)	P.N. Nominal pressure (Bar)	Number of holes No. of holes	Distance between holes (mm)	Weight Weight (kg)
FLANGE FLANGED	Polyamide with fiberglass	50	165	78	19	10	4	125	0.304
		65	185	92	20		4	145	0.400
		80	200	110	22		8	160	0.460
		100	220	133	24		8	180	0.550
		125	254	167	28		8	210	0.815
		150	285	190	29		8	240	1,048

*Drills in accordance with ISO 7005-2, UNE-EN 1092-2 and ANSI 150 Lbs .

REGULATIONS

- ★ DIN and ANSI compatible drills 150 Lbs .
- ★ Design according to ISO 7005-2 regulations.
- ★ Complies with UNE EN-1092 regulations.



Hidráulica Romyspan se exime de responsabilidad respecto a errores de la información expuesta en este documento, la cual podrá ser modificada sin previo aviso. Todos los derechos están reservados. ©Copyright.



HIDRÁULICA ROMYSPAN S.L.
C/Bogotá s/n nave 1-2-3
Pol. Ind. LA SERRETA
MURCIA (30500)
España

TEL: +34 968 80 94 87

info@romyspan.com

